

Nortriptyline HCl Capsules - USP Method

Column: Luna® 5 µm CN 100 Å, LC Column 250 x 4.6 mm, Ea

Dimensions: 250 x 4.6 mm ID

Order No: 00G-4255-E0

Elution Type: Isocratic

Eluent A: Acetonitrile

Eluent B: Methanol

Eluent C: 17mM potassium phosphate, pH 6.7

Gradient Profile:	Step No.	Time (min)	Pct A	Pct B	Pct C
1	1	0	40	43	17

Flow Rate: 2.5 mL/min

Col. Temp.: ambient

Detection: Differential refractometer @ 0.0000000000 (ambient)

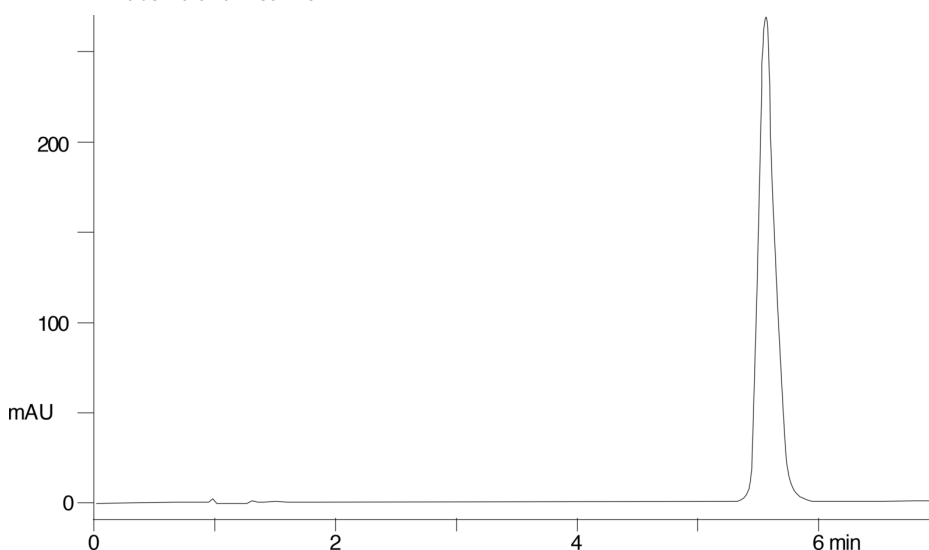
Analyst Note: SecurityGuard™ Guard Cartridge System extends column lifetime.

- SecurityGuard Cartridges, CN 4 x 3.0mm, 10/Pk Part No.: AJ0-4305

- Holder Part No.: KJ0-4282



Products used in this application:



ANALYTES:

1 Nortriptyline

Retention Time: 5.556 min



Sample Preparation Details

for HPLC Application ID No.: 9296

Nortriptyline HCl Capsules - USP Method

PRODUCT DESCRIPTION:

Solvent Saver Inlet Filter, PEEK, 10µm, for 1/8in OD Tubing, Ea

Order No.: AH0-1562

SOLID PHASE EXTRACTION (SPE) PROCEDURE:

Note: The solvent volumes shown below are for a bed mass.

The solvent volumes will need to be adjusted for a smaller or larger bed mass.

Condition:

Load:

Wash:

Dry:

Elute:

Final Prep and Analysis:

Inject: 0 µL on HPLC Differential refractometer @ 0.0000000000 (ambient)

ANALYTES:	Spiked Conc. (ng/mL)	Log P	pKa	% Rec	%RSC (n=0)
1 Nortriptyline	0.38				

Note: This method is designed as a convenient starting point for further investigation and can be tailored to meet your extraction goals.
Call your local Phenomenex Representative for assistance in method development and optimization techniques.

©2025 Phenomenex Inc. All rights reserved.

For more information contact your Phenomenex Representative at support@phenomenex.com



Phenomenex products are available worldwide.

www.phenomenex.com

support@phenomenex.com