

EtG / EtS from Urine on Luna Omega 5u Polar C18, 50x4.6mm

Column: Luna Omega 5u Polar C18 100A, LC Column 50 x 4.6 mm, Ea

Dimensions: 50 x 4.6 mm ID

Order No: 00B-4754-E0

Elution Type: Gradient

Eluent A: 0.1% Formic Acid in H₂O

Eluent B: 0.1% Formic Acid in MeOH

Gradient Profile:	Step No.	Time (min)	Pct A	Pct B
	1	0	98	2
	2	2	40	60
	3	2.01	10	90
	4	3	10	90
	5	3.01	98	2
	6	4	98	2

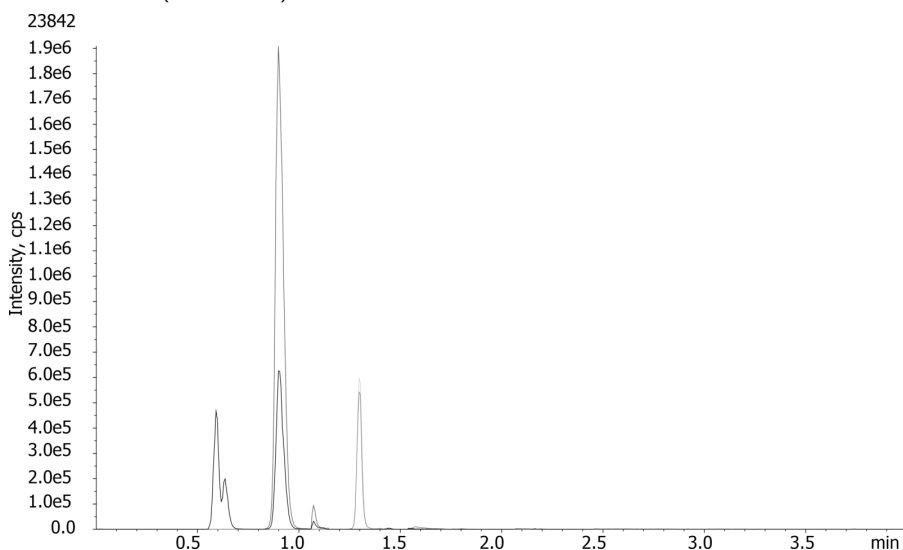
Flow Rate: 1 mL/min

Col. Temp.: 25 °C

Detection: Electrospray Mass Spec (ESMS) @ 0.0000000000 (550 °C)

Analyst Note: MMA (117.0-->72.9; 117.0-->54.9)

MMA-D3 (120.1-->75.9)



ANALYTES:

- 1** Interference
Retention Time: 0.593 min
- 2** Ethyl Sulfate (EtS)
Retention Time: 0.902 min
- 3** Ethyl Glucuronide (EtG)
Retention Time: 1.299 min



Products used in this application:



Sample Preparation Details

for HPLC Application ID No.: 23842

EtG / EtS from Urine on Luna Omega 5u Polar C18, 50x4.6mm

PRODUCT DESCRIPTION:

Strata™-X-AW 33 µm Polymeric Weak Anion, 30 mg / 1 mL, Tubes , 100/Pk

Order No.: 8B-S038-TAK

SOLID PHASE EXTRACTION (SPE) PROCEDURE:

Note: The solvent volumes shown below are for a 30 mg bed mass.

The solvent volumes will need to be adjusted for a smaller or larger bed mass.

Condition:

Load:

Wash:

Dry:

5-10 min under high vacuum

Elute:

Final Prep and Analysis:

Inject: 0 µL on HPLC Electrospray Mass Spec (ESMS) @ 0.000000000 (550°C)

ANALYTES:	Spiked Conc. (ng/mL)	Log P	pKa	% Rec	%RSC (n=0)
1 Interference	0				
2 Ethyl Sulfate (EtS)	0				
3 Ethyl Glucuronide (EtG)	0				

Note: This method is designed as a convenient starting point for further investigation and can be tailored to meet your extraction goals.
Call your local Phenomenex Representative for assistance in method development and optimization techniques.

©2025 Phenomenex Inc. All rights reserved.

For more information contact your Phenomenex Representative at support@phenomenex.com



Phenomenex products are available worldwide.

www.phenomenex.com

support@phenomenex.com