

EPA 552.1 by Strata-X-A on a ZB-MR2

Column: Zebron™ ZB-MultiResidue™-2, GC Cap. Column 30 m x 0.32 mm x 0.25 µm, Ea
Phase: Proprietary Pesticides Phase
Dimensions: 30 meters x 0.32 mm x 0.25 µm
Order No: 7HM-G017-11
Oven Profile:

Carrier Gas: Constant Flow Helium, 2.3 mL/min
Injection: Pulsed 0.000000000:1 0 µL @ 250°C
Detection: Refractive Index (340°C)

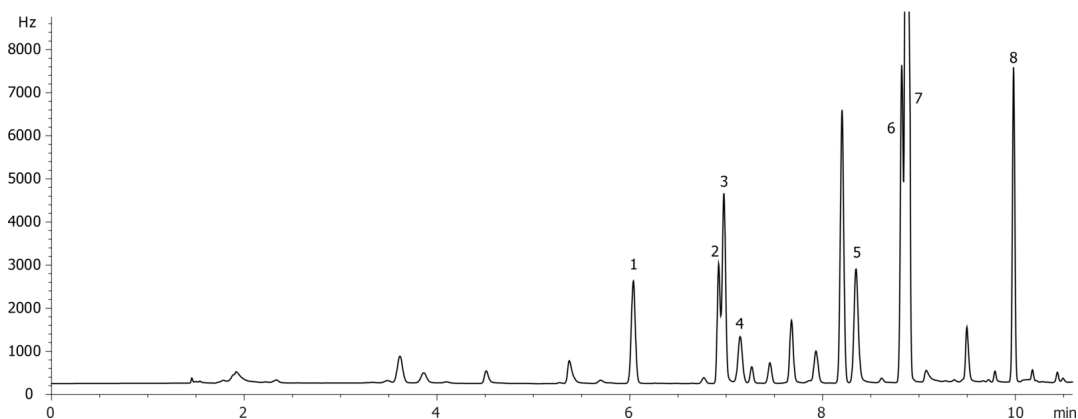
Analyst Note: Derivatization: Add 1mL of MTBE to the eluent in a screw cap vial or test tube. Heat the sample at 50°C for 1.5 hours. Remove and allow the sample to cool to room temperature. Slowly add 10mL of saturated sodium bicarbonate and invert the sample several times releasing carbon dioxide gas frequently. Aspirate 100µL of the organic layer and transfer to a 2mL vial with insert. Add 10µL of internal standard (1,2,3-Trichloropropane) and



Products used in this application:



19323

**ANALYTES:**

- 1 Chloroacetic acid
- 2 Bromoacetic acid
- 3 Dichloroacetic acid
- 4 Dalapon
- 5 Trichloroacetic acid
- 6 Bromochloroacetic acid
- 7 1,2,3-Trichloropropane
- 8 Dibromoacetic acid

