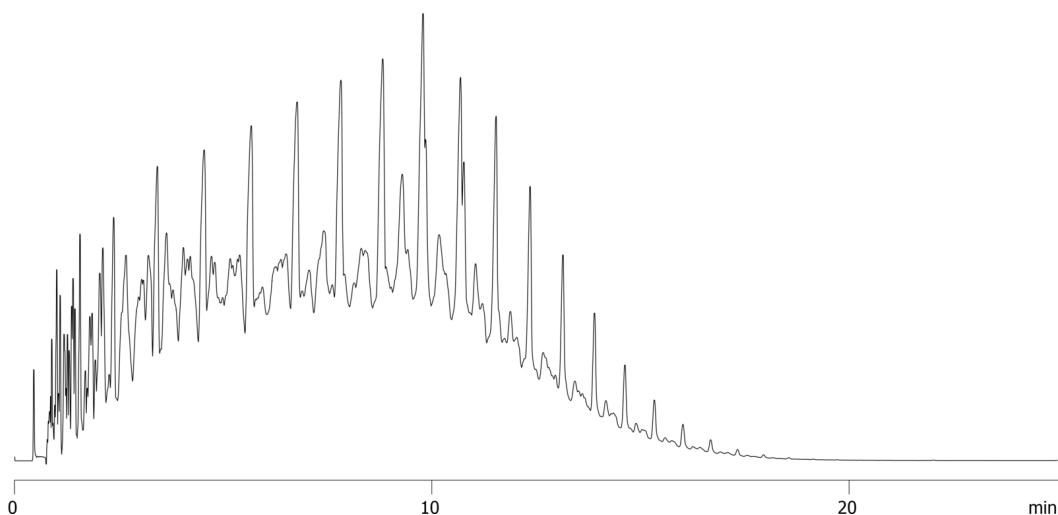


**Diesel Fuel on ZB-1XT 5x0.53x0.15****Column:** Zebtron<sup>TM</sup> ZB-1XT SimDist Metal, GC Cap. Column 5 m x 0.53 mm x 0.15  $\mu$ m, Ea**Phase:** 100% Dimethylpolysiloxane**Dimensions:** 5 meters x 0.53 mm x 0.15  $\mu$ m**Order No:** 7AK-G026-05**Oven Profile:****Carrier Gas:** Constant Flow Helium, 7 mL/min**Injection:** On-Column 0.000000000:1 0  $\mu$ L @ 33°C**Detection:** Refractive Index (450°C)**Analyst Note:** Sample was 1% in CS<sub>2</sub>. Chromatogram is baseline subtracted.

19263

**Products used in this application:****ANALYTES:**

- 1 Diesel fuel

