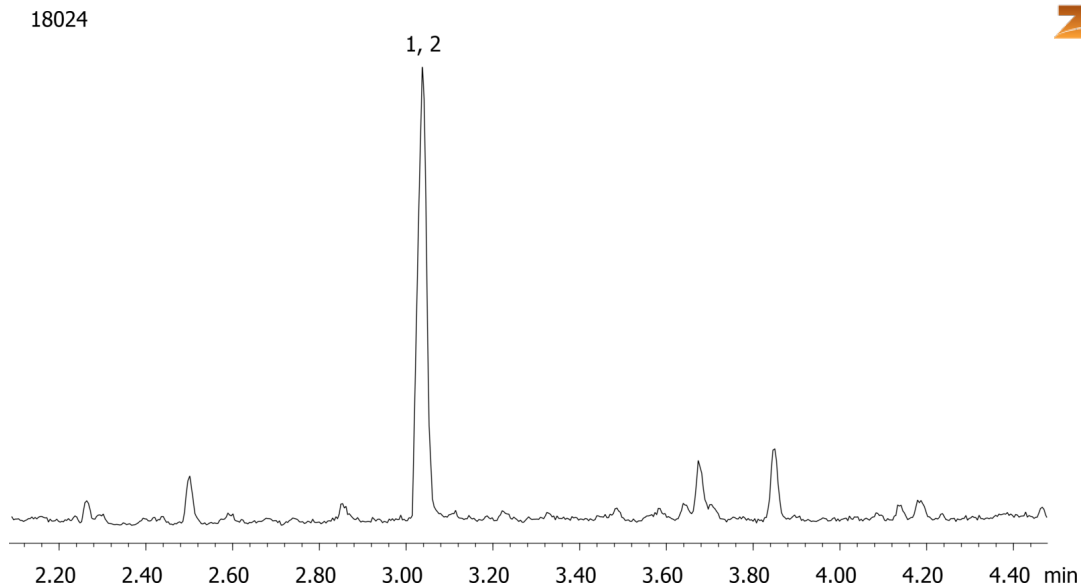


Carboxy-THC from urine by Screen C on a ZB-Drug1

Column: Zebtron™ ZB-Drug-1, GC Cap. Column 10 m x 0.18 mm x 0.18 µm, Ea
Phase: Proprietary Drug Phase
Dimensions: 10 meters x 0.18 mm x 0.18 µm
Order No: 7CD-G023-08
Oven Profile:

Carrier Gas: Constant Flow Helium, 55 cm/sec
Injection: Split 10.0000000000:1 0 µL @ 280°C
Detection: Refractive Index (320°C)
Analyst Note: Analytes are 15ng/mL in urine derivatized with BSTFA
Sim ions:
(Quant ion*) D3-Carboxy-thc (*374,476,477): Carboxy-thc (*371,473,474)

**Products used in this application:****ANALYTES:**

- 1 Carboxy-THC-d3
- 2 Carboxy-THC

