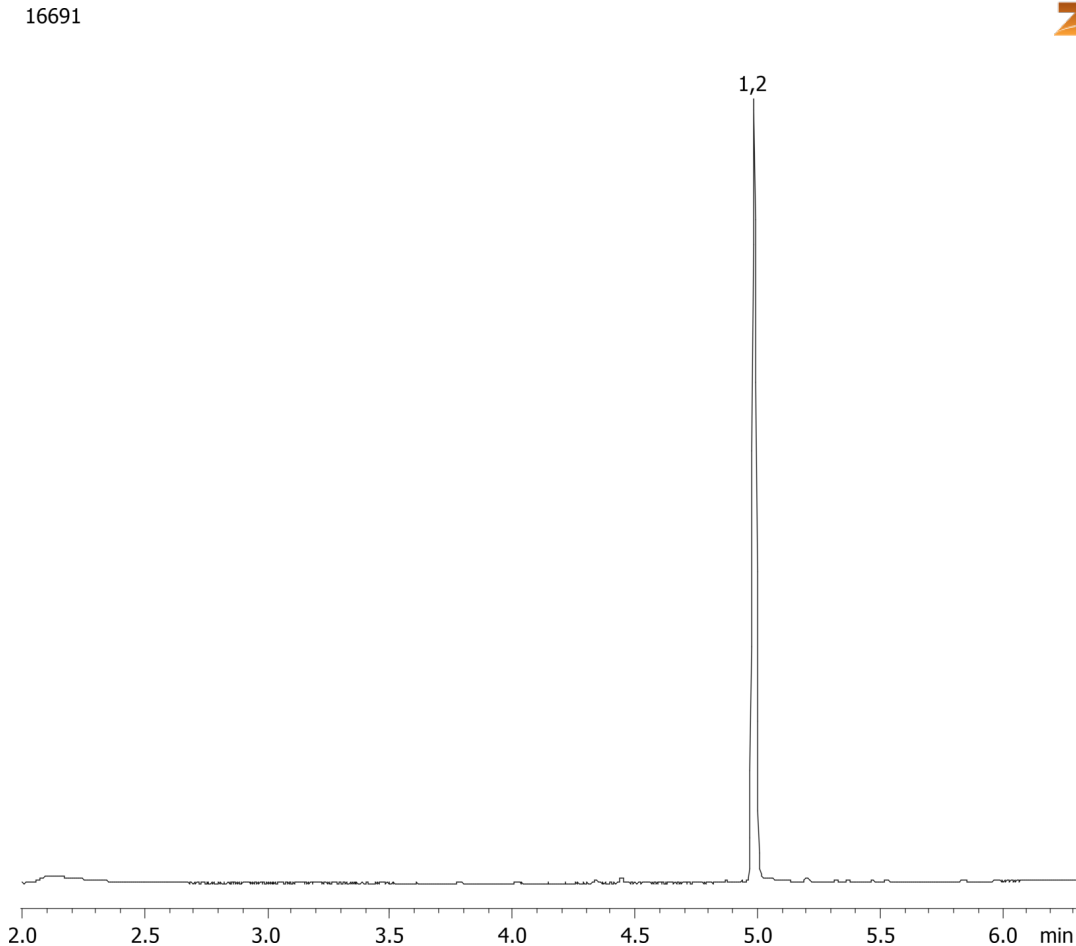


Carboxy-THC by MSD on a ZB-1MS

Column: Zebtron™ ZB-1MS, GC Cap. Column 10 m x 0.18 mm x 0.18 µm, Ea
Phase: 100% Dimethylpolysiloxane
Dimensions: 10 meters x 0.18 mm x 0.18 µm
Order No: 7CD-G011-08
Oven Profile:

Carrier Gas: Constant Flow Helium, 55 cm/sec
Injection: Split 10.000000000:1 0 µL @ 250°C
Detection: Refractive Index (300°C)
Analyst Note: Analytes are 1.5ppm derivatized with BSTFA
Sim ions:
(Quant ion*) D3-Carboxy-thc (*374,476,477): Carboxy-thc (*371,473,474)

**Products used in this application:****ANALYTES:**

- 1 Carboxy-THC-d3
- 2 Carboxy-THC

