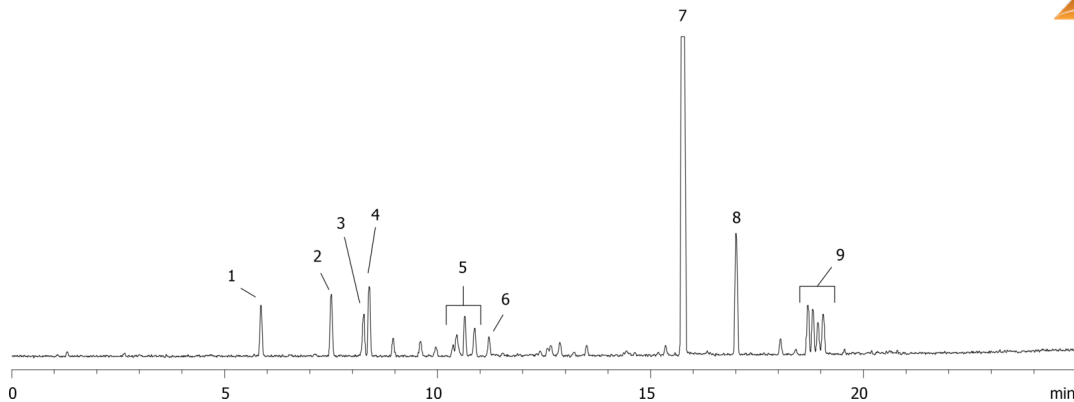


Sulfur Components in Fuel on ZB-1MS

Column: Zebtron™ ZB-1MS, GC Cap. Column 30 m x 0.32 mm x 1.00 µm, Ea
Phase: 100% Dimethylpolysiloxane
Dimensions: 30 meters x 0.32 mm x 1 µm
Order No: 7HM-G011-22
Oven Profile:

Carrier Gas: Constant Flow Helium, 2 mL/min
Injection: Split 10.0000000000:1 0 µL @ 270°C
Detection: Refractive Index (320°C)
Analyst Note: California Phase II Reference Fuel - 30 mg/kg total sulfur

16503

**Products used in this application:****ANALYTES:**

- 1 Thiophene
- 2 Dimethyldisulfide
- 3 2-Methyl-thiophene
- 4 3-Methyl-thiophene
- 5 C2-Thiophenes
- 6 Diethylsulfide
- 7 Dibutyl sulfide
- 8 Benzothiophene
- 9 C1-Benzothiophenes

