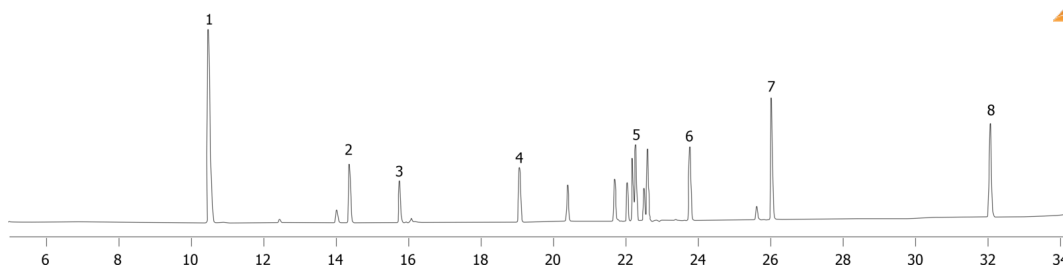


**Polychlorinated Biphenyls (PCBs) on ZB-35****Column:** Zebron<sup>™</sup> ZB-35, GC Cap. Column 30 m x 0.25 mm x 0.25 µm, Ea**Phase:** 35% Phenyl 65% Dimethylpolysiloxane**Dimensions:** 30 meters x 0.25 mm x 0.25 µm**Order No:** 7HG-G003-11**Oven Profile:****Carrier Gas:** Constant Flow Hydrogen, 5 mL/min**Injection:** Splitless 0.000000000:1 0 µL @ 280°C**Detection:** Refractive Index (375°C)**Analyst Note:** Application courtesy of ALGE**Products used in this application:**

16501

**ANALYTES:**

- 1** Hexachlorobenzene
- 2** PCB 28
- 3** PCB 52
- 4** PCB 101
- 5** PCB 153
- 6** PCB 138
- 7** PCB 180
- 8** PCB 209

