

Mineral Oil on ZB-1HT

Column: Zebron™ ZB-1HT, GC Cap. Column 30 m x 0.25 mm x 0.10 µm, Ea

Phase: 100% Dimethylpolysiloxane

Dimensions: 30 meters x 0.25 mm x 0.1 µm

Order No: 7HG-G014-02

Oven Profile:

Carrier Gas: Constant Flow Helium, 1 mL/min

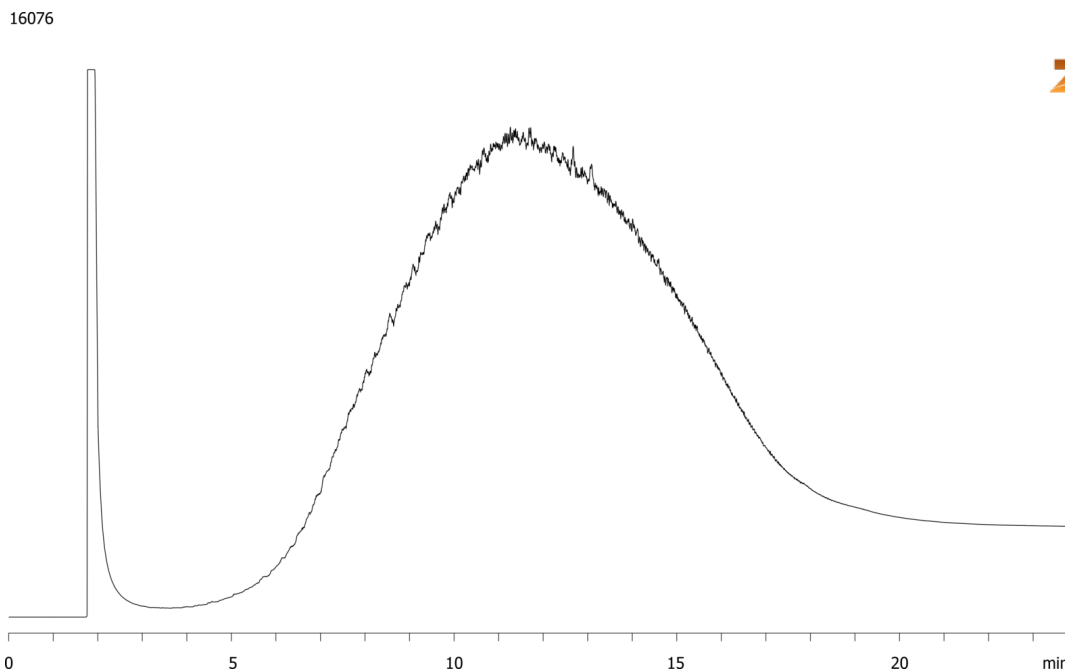
Injection: On-Column 0.000000000:1 0 µL @ 153°C

Detection: Refractive Index (400°C)

Analyst Note: Sample was 1% in dichloromethane



Products used in this application:



ANALYTES:

1 Mineral oil

