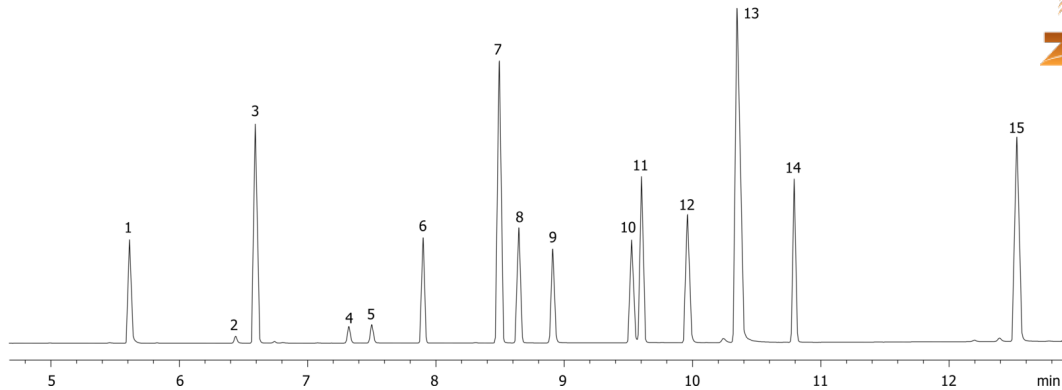


**EPA Method 515.2: Chlorinated Acids on ZB-5****Column:** Zebron™ ZB-5, GC Cap. Column 30 m x 0.25 mm x 0.25 µm, Ea**Phase:** 5% Phenyl 95% Dimethylpolysiloxane**Dimensions:** 30 meters x 0.25 mm x 0.25 µm**Order No:** 7HG-G002-11**Oven Profile:****Carrier Gas:** Constant Flow Helium, 1.2 mL/min**Injection:** Splitless 0.000000000:1 0 µL @ 200°C**Detection:** Refractive Index (280°C)**Analyst Note:** Analytes were methylated**Products used in this application:**

15790



## EPA Method 515.2: Chlorinated Acids on ZB-5

### ANALYTES:

- 1** 3,5-Dichlorobenzoic acid
- 2** 2,4-Dichlorophenylacetic acid
- 3** Dicamba
- 4** Dichloroprop
- 5** 2,4-D
- 6** 4,4'-Dibromooctafluorobiphenyl
- 7** Pentachlorophenol
- 8** Silvex
- 9** 2,4,5-T
- 10** 2,4-DB
- 11** Dinoseb
- 12** Bentazon
- 13** Picloram
- 14** Dacthal
- 15** Acifluorfen

