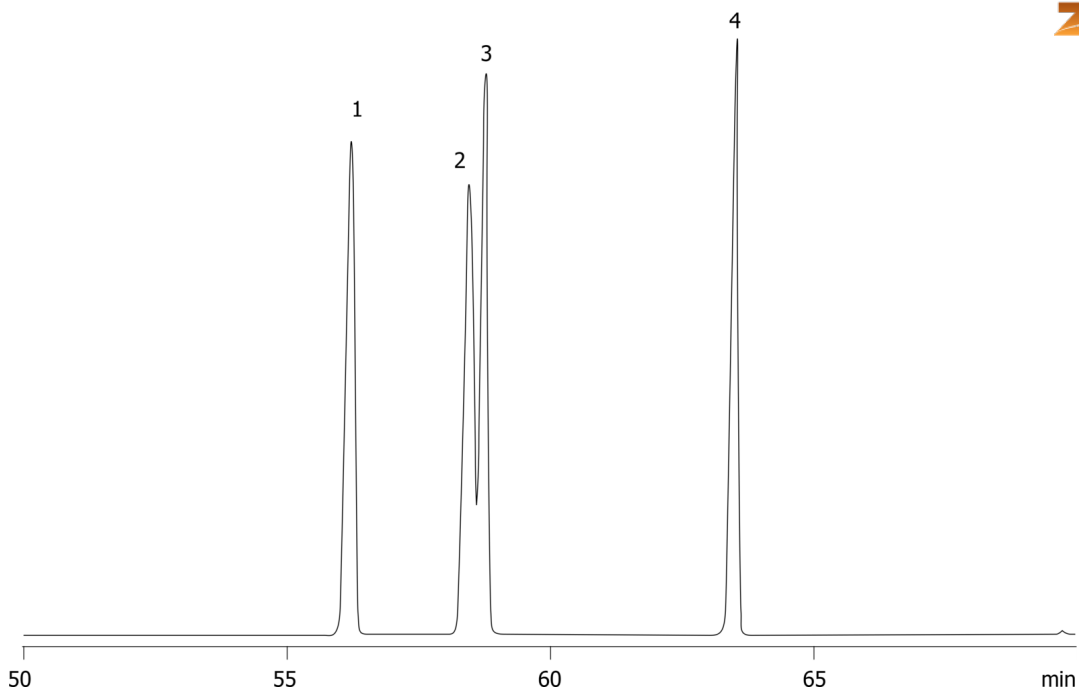


BTEX ZB1 100x0.25x0.5**Column:** Zebron[™] ZB-1, GC Cap. Column 100 m x 0.25 mm x 0.50 μ m, Ea**Phase:** 100% Dimethylpolysiloxane**Dimensions:** 100 meters x 0.25 mm x 0.5 μ m**Order No:** 7MG-G001-17**Oven Profile:****Carrier Gas:** Constant Flow Helium, 1.4 mL/min**Injection:** Split 20.0000000000:1 0 μ L @ 225°C**Detection:** Refractive Index (300°C)**Analyst Note:** Portion of BTEX solution chromatogram showing near full resolution of para- and meta-xylene.

14901

**ANALYTES:**

- 1 Ethylbenzene
- 2 m-Xylene
- 3 p-Xylene
- 4 o-Xylene

**Products used in this application:**