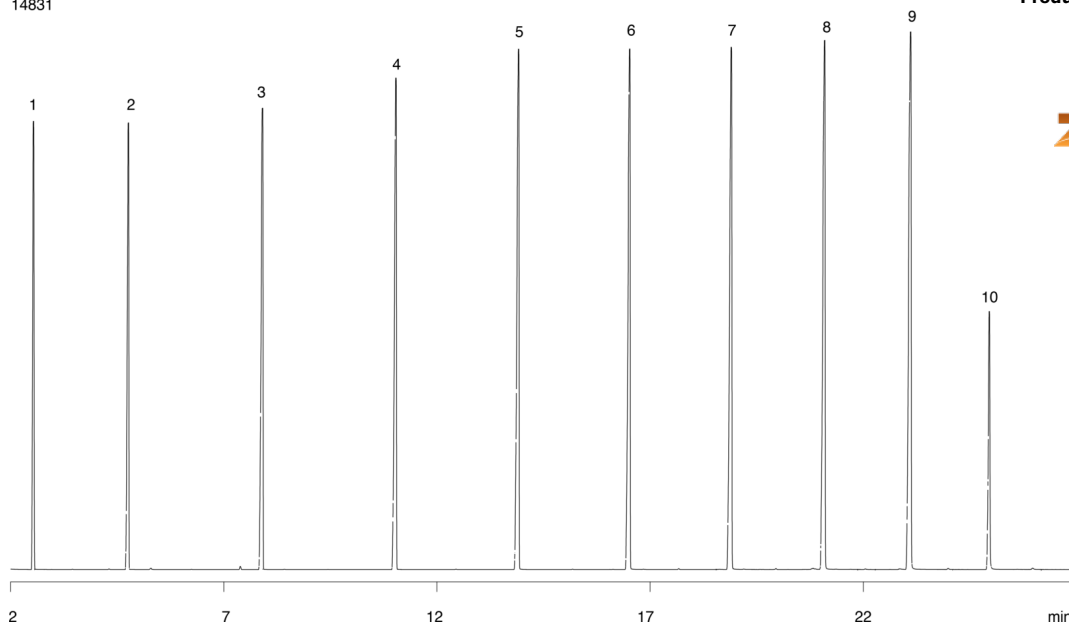


Even Carbon Fatty Acid Methyl Esters (FAMES) on ZB-5**Column:** Zebron[™] ZB-5, GC Cap. Column 30 m x 0.25 mm x 0.25 µm, Ea**Phase:** 5% Phenyl 95% Dimethylpolysiloxane**Dimensions:** 30 meters x 0.25 mm x 0.25 µm**Order No:** 7HG-G002-11**Oven Profile:****Carrier Gas:** Constant Flow Helium, 1.1 mL/min**Injection:** Split 20.000000000:1 0 µL @ 280°C**Detection:** Refractive Index (240°C)

14831

**Products used in this application:**

Even Carbon Fatty Acid Methyl Esters (FAMES) on ZB-5

ANALYTES:

- 1 Methyl caproate
- 2 Methyl caprylate
- 3 Methyl caprate
- 4 Methyl laurate
- 5 Methyl myristate
- 6 Methyl palmitate
- 7 Methyl stearate
- 8 Methyl arachidate
- 9 Methyl behenate
- 10 Methyl lignocerate

