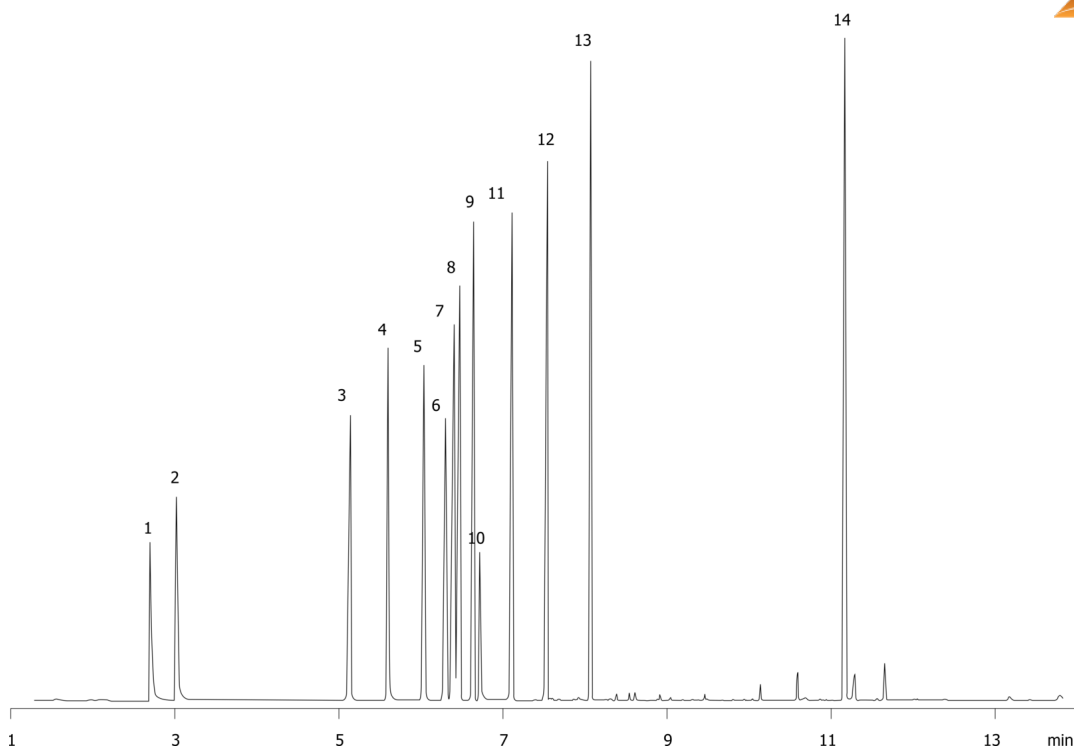


Aromatic Amines on ZB-5**Column:** Zebron[™] ZB-5, GC Cap. Column 30 m x 0.25 mm x 0.25 µm, Ea**Phase:** 5% Phenyl 95% Dimethylpolysiloxane**Dimensions:** 30 meters x 0.25 mm x 0.25 µm**Order No:** 7HG-G002-11**Oven Profile:****Carrier Gas:** Constant Flow Helium, 1 mL/min**Injection:** Split 15.0000000000:1 0 µL @ 220°C**Detection:** Refractive Index (180°C)**Analyst Note:** Analytes are at 1.58mg/mL each.**Products used in this application:**

14790



Aromatic Amines on ZB-5

ANALYTES:

- 1 Piperidine
- 2 2-Methylpiperidine
- 3 Aniline
- 4 Benzylamine
- 5 alpha-Phenylethylamine
- 6 N-Methylaniline
- 7 m-Toluidine
- 8 o-Toluidine
- 9 N,N-Dimethylaniline
- 10 beta-Phenylethylamine
- 11 N-Ethylaniline
- 12 2,4-Dimethylaniline
- 13 N,N-Diethylaniline
- 14 Dibenzylamine

